

**CUSTOMER INFORMATION ISU
WELS - TRIESTE V.V.**

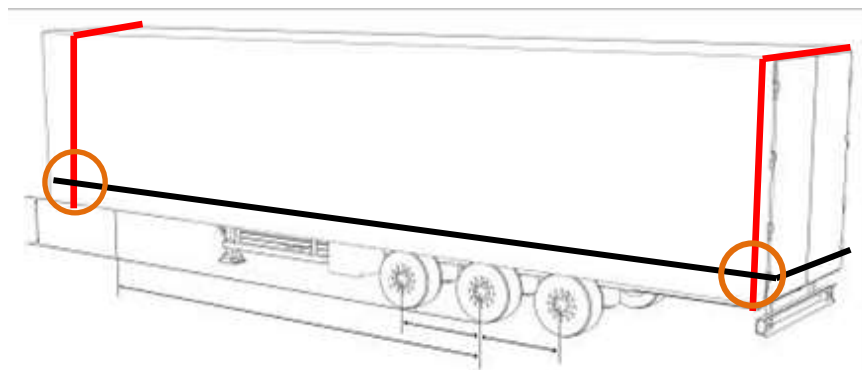
TECHNICAL AND OPERATIONAL INFORMATION

04.03.2014

**The following information has to be paid attention to when transporting a
NON-CRANEABLE semitrailer on the ISU- train Wels - Triest v.v.:**

Technical Information:

- The semitrailer must not exceed a height of 4,0 m and a width of 2,6 m.
- The semitrailer must have a loading height of the king pin from 85 cm to 113 cm.
- The distance between king pin and central axis must be ~ 7,7 m.
- The axis-center distance of the semitrailer must be 1.310 mm.
- Semitrailer with tires between 850 mm and 1.150 mm diameter can be loaded.
- NON-CRANEABLE semitrailer with tarpaulins need to be tightened with a belt at each end (length of the belt approx. 9 m, the belt shall be in one piece, see picture below).
- **Attention for loading security:** A tie down of 1,0 g forwards and 1,0 g backwards and of 0,5 g in both directions sideways for securing the loading is prescribed.
- Compliance with the rules according to the law (StVO) concerning axle load limit.
- In order to define the (gross) weight of the semitrailer, the tare weight of the truck has to be indicated.



At the front and the rear of semitrailer with tarpaulins, a belt has to be mounted 15 to 25 cm from each end of the semitrailer. The belt must be placed behind the customs line, in case a customs line is mounted on the semitrailer.

Clarification for CRANE ABLE semitrailers fitted with a CODIFICATION PLATE:

Crane able semitrailers fitted with a CODIFICATION PLATE don't need this additional requirements. Crane able semitrailers don't need the ISU-Equipment and don't need the safety belt system. Cranable semitrailers can be loaded on the ISU-wagons but without the ISU-Equipment.

NON CRANE ABLE SEMITRAILERS

Semitrailer in a good condition (no bulges of the tarpaulin, tarpaulin not torn, fitted with belts according to the rules)



Belts behind the customs line



CRANE ABLE SEMITRAILERS

Crane able semitrailer without belts, in a good condition (no bulges of the tarpaulin, tarpaulin not torn)
The signed markings together with the codification plate show that this semitrailer is crane able.



Codification plate of a crane able semitrailer

The codification plate is the official confirmation that the semitrailer is designed for railway transport.



Semitrailers designed to be crane able and fitted with a codification plate do not need the safety belts! Please note that the manufacturer is responsible for the codification plate.

Examples for non correct semitrailers

Tarpaulin must not be bulged on the side and on the roof:





Belt must be fitted properly on the frame – not on the tarpaulin:



Binding not acceptable

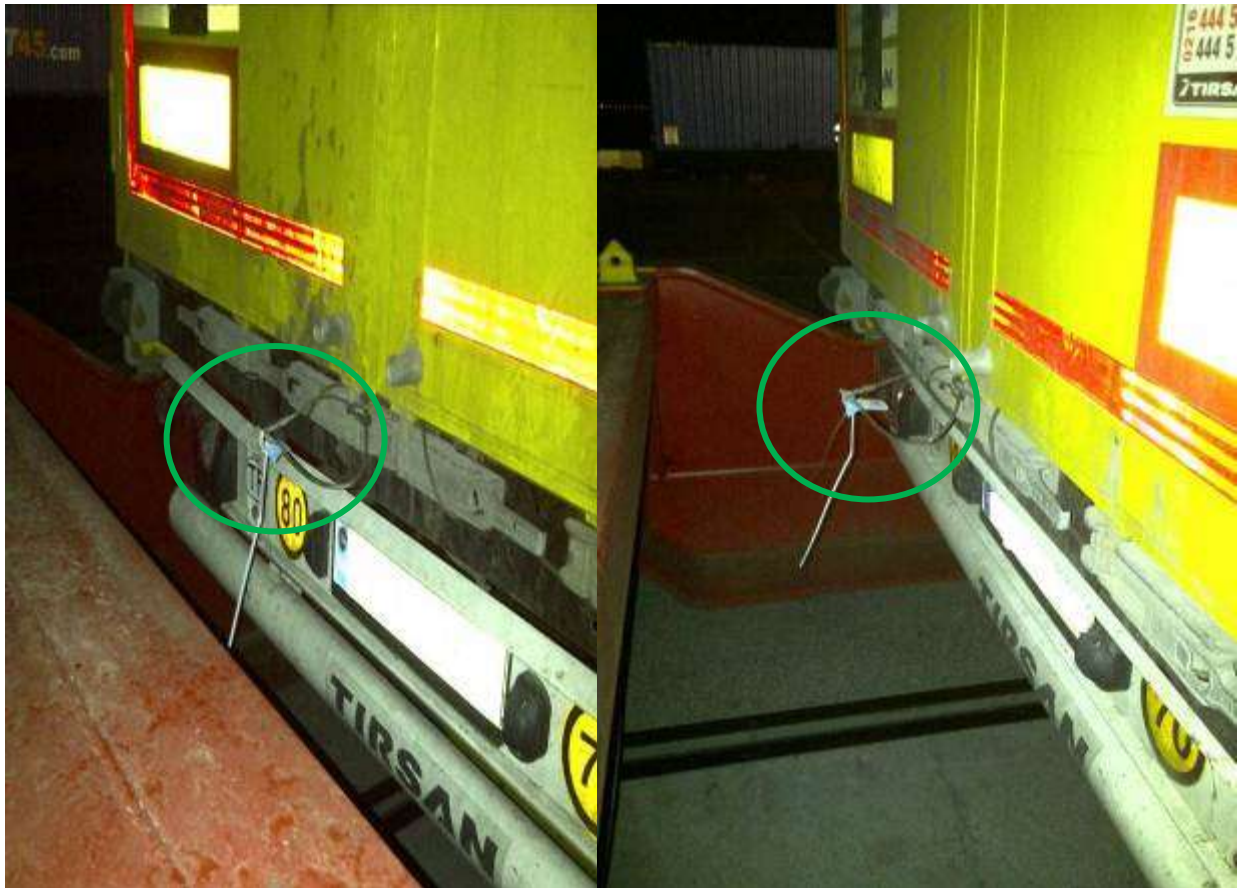




No open or damaged tarpaulin on the side and on the roof

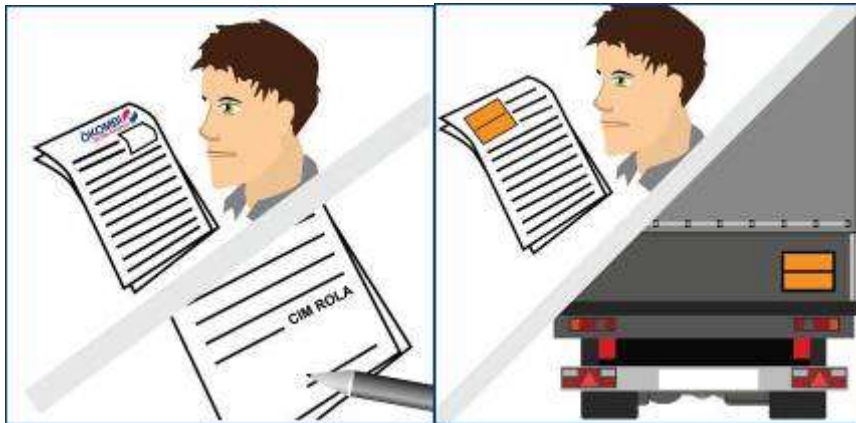


Customs seal attached the right way



- Fit customs seals on every semitrailer
- For northbound and also for southbound trains

Customs documents



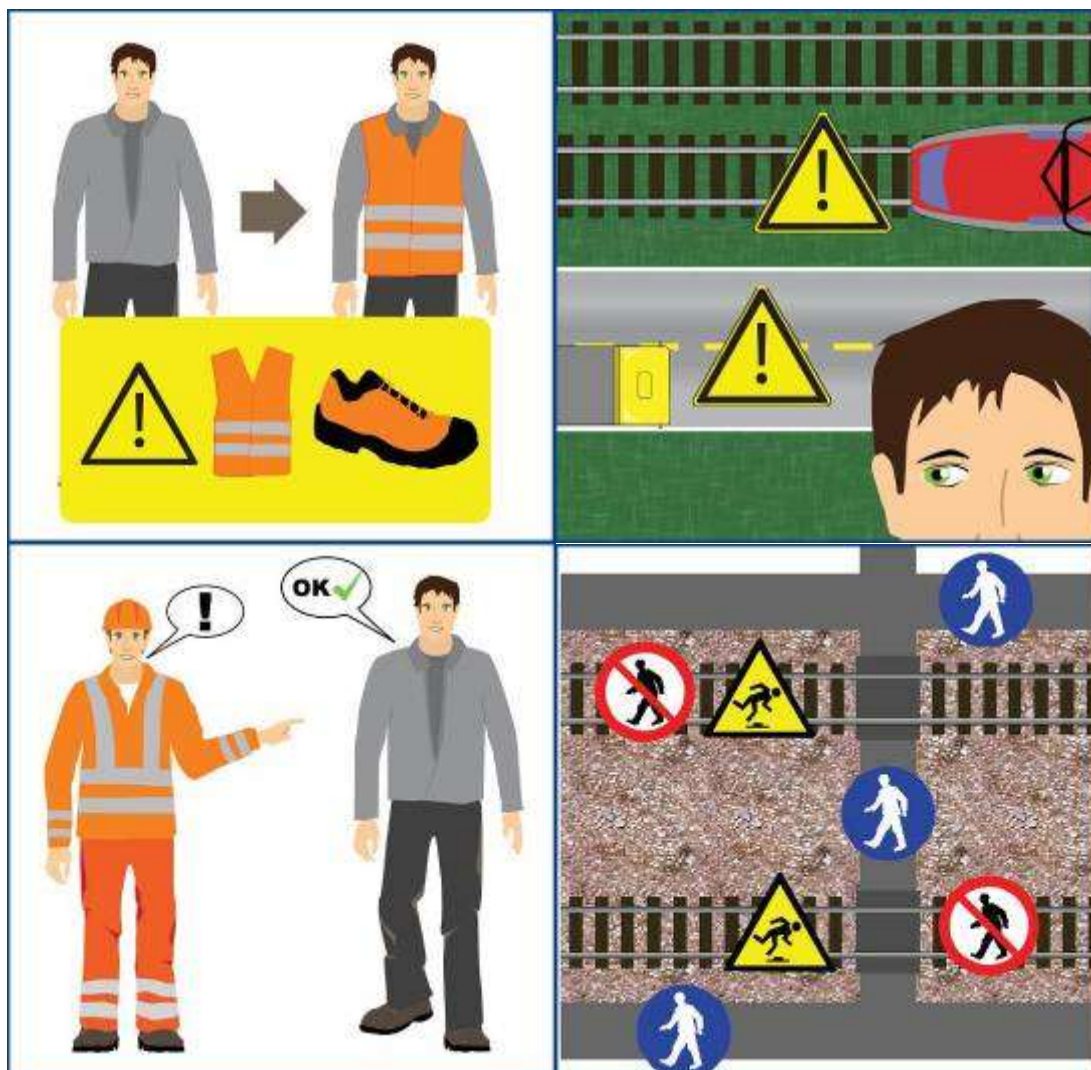
- Please do not exceed the validation time of the customs document
- Ask your customs issuing authority for a longer validation period for the reason of intermodal transport

Loading Security



- Goods must be loaded evenly
- Loading security comply with http://ec.europa.eu/transport/road_safety/vehicles/doc/cargo_securing_guidelines_en.pdf
- **Semitrailers with unbalanced loading cannot be lifted with the ISU system!**
- A tie down of 1,0 g forwards and 1,0 g backwards and of 0,5 g

in both directions sideways for securing the loading is prescribed
Safety at the Terminal



- **Truck drivers must wear high visibility jackets!**
- **Truck drivers must follow the orders of the Terminal authorities!**
- **Do not cross railway tracks! Use only signed ways!**
- **Do not climb on the wagons!**
- **Please see also general information of the Terminal!**